

## Everton Football Kit – Instructions for Use

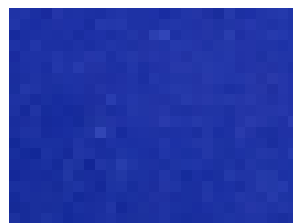
Print this document onto 90gsm paper or heavier. I would personally recommend 120gsm weight paper with minimum print settings of 720dpi. (If you are unsure how to do this please consult your printer's manual).

This may seem a strange way to start, but to make sure your shirt is cut in the correct place I would suggest you do the following first:

1. Take your Sizzix Doll Overalls large die and cut it through parchment/vellum or acetate. Trim around the shirt part.
2. Remove the actual shirt, so you are just left with the cut out. Fix this to the die with normal sticky tape. You should have something that looks like this:



3. Next, trim around black line surrounding the shirt shape. Slide this under the template on your Sizzix die and make sure you have lined it up with the hole.
4. To make sure the paper does not slip, put the cutting mat over the top of the die/paper, then turn it upside down – rather like turning out a cake. It will now be the correct way round for cutting.
5. Now cut the shirt and remove it from the Sizzix machine. Cut shorts and shoes, then highlight with a white pen. Assemble your footballer as required.



I have included a plain printed square in case you would like to match the colour of the shorts to the top.